



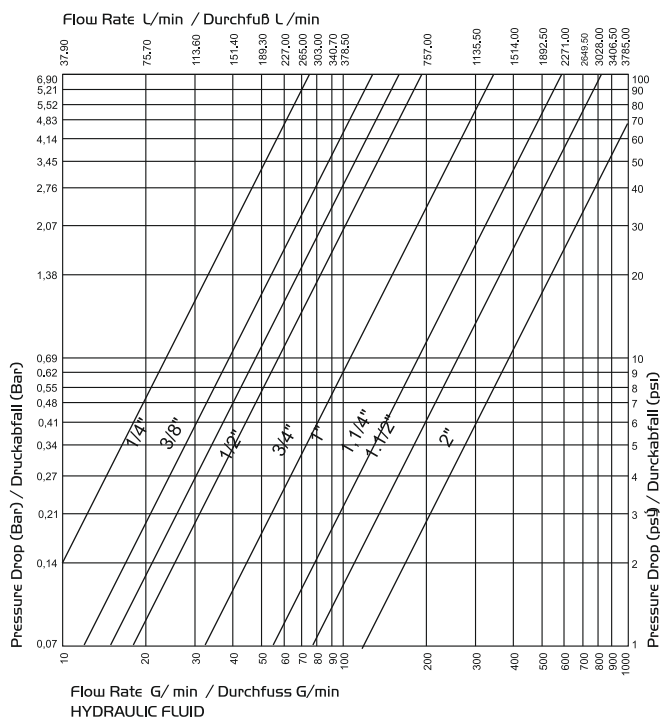
ZŁĄCZA HYDRAULICZNE



SERIA 169



Interchangeability / Kompatibilität
SNAP - TITE 75 SERIES



Valve System & Combination

Double Shut-Off : Shut-Off Socket & Shut-Off Plugs
Thru-Flow : Thru Flow Socket & Thru Flow Plugs
Ps : Thru-Flow Socket can not be used with Shut-Off plugs only plug and socket of same size and interchangeable regardless of material and end fittings.
Valves close before disconnection.

Ventiltypen und Kombinationsmöglichkeiten

- Doppelte Absperrung: Nippel mit Ventil und Kupplung mit Ventil
- Freier Durchlass: Kupplung und Stecker ohne Ventil
Beachte: Kupplung mit freiem Durchlass kann verwendet werden mit Nippel mit Ventil. Kombinationen gleicher Größe sind austauschbar. Ventil schließt vor dem Öffnen.

Application

169 serie couplers are designed for high pressure and rugged heavy duty hydraulic applications. The coupling connect under pressure up to 210 bar. 169 series designed for up to 345 bar (5000 psi). High flow and low pressure drop. Main using areas are oil fields and offshore.

Anwendungen

169 Kupplungen sind für rauhe Umgebungen gedacht in der Hochdruckhydraulik. Die Kupplungen sind bis 210 bar kuppelbar und bis zu einem Arbeitsdruck von 345 bar verwendbar. Hauptanwendungen sind Ölfelder und Raffinerien.

• Pressure Ratings - Drucktabelle

Size Größe	Spillage (cc) Restleckage beim Auskuppeln (cc)	Air Inclusion (cc) Bauraum (cc)	Maximum Working Pressure Max. Arbeitsdruck		Maximum Bursting Pressure Max. Sprengdruck	
			PSI	BAR	PSI	BAR
3/4"	8	12	5000	345	20000	1380
1"	16	25	5000	345	20000	1380
1.1/4"	31	48	5000	345	15000	1035
1.1/2"	64	98	5000	345	15000	1035
2"	141	205	5000	345	15000	1035
2.1/2"	204	368	3000	210	6000	415
3"	320	480	3000	210	6000	415
4"	400	610	400	30	1000	70



SERIE 169

HYDRAULIC COUPLINGS
HYDRAULIK KUPPLUNGEN



Interchangeability - Kompatibilität
SNAP - TITE 75 SERIES

Temperature Range - Temperaturbereich
-20°C +100°C (-4°F +212°F)

Working Pressure - Betriebsdruck
In The Chart

Flow capacity - Nennweite
3/4" to 4"

Seals - Dichtungen
O-Ring + PTFE Back-Up Ring

Standard Version - Standardversion
C : Steel - Stahl
S6 (316) : Stainless Steel - Edelstahl

Otions - Optionen
V : FPM Seal - FPM Dichtung
E : EPDM Seal - EPDM Dichtung

Material - Material

Coupler Body -
Kupplungsgrundkörper : Steel Zinc Plated -
Stahl Verzinkt
Sleeve - Hülse : Steel - Stahl
Valve - Ventil : Steel - Stahl
Springs - Federn : Stainless Steel -
Edelstahl
Seals - Dichtungen : Nitrile NBR (Ni)
Plug - Nippel : Steel Zinc Plated -
Stahl Verzinkt

For optional orders please add the symbol
of your option end of the order no.
Bei Bestellungen Kennbuchstabe bitte
hinzufügen (Beispiel: 169.12 DGB 26C)

Couplers Kupplungen

Body Size
Nennweite

Connection
Anschlüsse
ØT

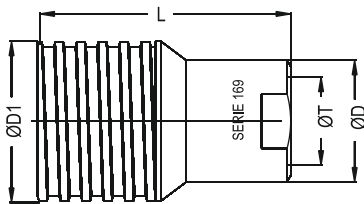
Order No / Bestellnr.

QD

ØD1

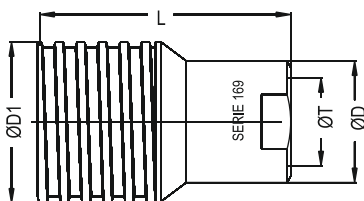
L

Acme Thread
Trapezgewinde



BSP Female Threaded Shut-Off Socket
Kupplungen mit Ventil BSP Innengewinde

12	BSP 3/4"	169.12 DGB 26	35.5	44.5	83.2	1.3/4"-8
16	BSP 1"	169.16 DGB 33	45.0	56.8	106	2.1/4"-6
20	BSP 1.1/4"	169.20 DGB 42	54.4	66.3	136.3	2.5/8"-6
24	BSP 1.1/2"	169.24 DGB 48	63.4	82.2	151.8	3.1/4"-4
32	BSP 2"	169.32 DGB 60	82.5	101.5	179	4"-4
40	BSP 2.1/2"	169.40 DGB 75	86	127.0	189.5	5"-4
48	BSP 3"	169.48 DGB 88	108	152.4	210	6"-4
64	BSP 4"	169.64 DGB 113	133.4	168.4	239	6.5/8"-4



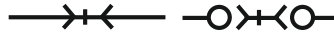
NPSF Female Threaded Shut-Off Socket
Kupplungen mit Ventil NPSF Innengewinde

12	NPSF 3/4"	169.12 NPGB 26	35.5	44.5	83.2	1.3/4"-8
16	NPSF 1"	169.16 NPGB 33	45.0	56.8	106	2.1/4"-6
20	NPSF 1.1/4"	169.20 NPGB 42	54.4	66.3	136.3	2.5/8"-6
24	NPSF 1.1/2"	169.24 NPGB 48	63.4	82.2	151.8	3.1/4"-4
32	NPSF 2"	169.32 NPGB 60	82.5	101.5	179	4"-4
40	NPSF 2.1/2"	169.40 NPGB 75	86	127.0	189.5	5"-4
48	NPSF 3"	169.48 NPGB 88	108	152.4	210	6"-4
64	NPSF 4"	169.64 NPGB 113	133.4	168.4	239	6.5/8"-4

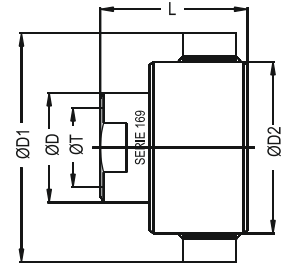




Interchangeability / Kompatibilität
SNAP - TITE 75 SERIES

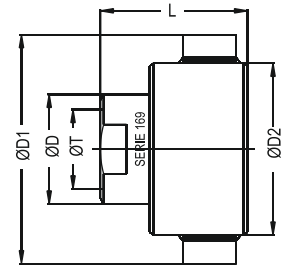


Plugs / Nippel



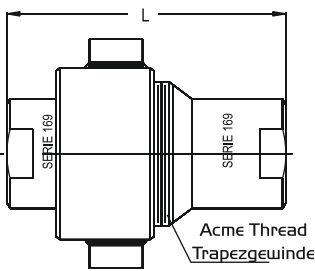
BSP Female Threaded Shut-Off Plug
Nippel mit Ventil BSP Innengewinde

Body Size Nennweite	Connection Anschlüsse ØT	Order No / Bestellnr.	QD	ØD1	L	Acme Thread Trapezgewinde
12	BSP 3/4"	169.12 DUB 26	35.2		72.0	1.3/4"-8
16	BSP 1"	169.16 DUB 33	45.0	106	88.0	2.1/4"-6
20	BSP 1.1/4"	169.20 DUB 42	54.4	118	112.0	2.5/8"-6
24	BSP 1.1/2"	169.24 DUB 48	63.5	144.5	127.5	3.1/4"-4
32	BSP 2"	169.32 DUB 60	82.5	168	154.0	4"-4
40	BSP 2.1/2"	169.40 DUB 75	86	203.2	134.4	5"-4
48	BSP 3"	169.48 DUB 88	108	216.0	148.5	6"-4
64	BSP 4"	169.64 DUB 113	133.4	279.4	180.6	6.5/8"-4



NPSF Female Threaded Shut-Off Plug
Nippel mit Ventil NPSF Innengewinde

12	NPSF 3/4"	169.12 NUGB 26	35.2		72.0	1.3/4"-8
16	NPSF 1"	169.16 NUGB 33	45.0	106	88.0	2.1/4"-6
20	NPSF 1.1/4"	169.20 NUGB 42	54.4	118	112.0	2.5/8"-6
24	NPSF 1.1/2"	169.24 NUGB 48	63.5	144.5	127.5	3.1/4"-4
32	NPSF 2"	169.32 NUGB 60	82.5	168	154.0	4"-4
40	NPSF 2.1/2"	169.40 NUGB 75	86	203.2	134.4	5"-4
48	NPSF 3"	169.48 NUGB 88	108	216.0	148.5	6"-4
64	NPSF 4"	169.64 NUGB 113	133.4	279.4	180.6	6.5/8"-4



Connected Length
Gesamtlänge

Size Größe	Connection Anschlüsse ØT
12	123.6
16	153.5
20	197.3
24	221.3
32	255
40	257.3
48	268.8
64	314



**Dust Caps for Sockets
Staubkappen für Kupplungen**

Size Größe	Order No - Bestellnr
12	169.12 KG 00
16	169.16 KG 00
20	169.20 KG 00
24	169.24 KG 00
32	169.32 KG 00
40	169.40 KG 00
48	169.48 KG 00
64	169.64 KG 00

**Dust Caps for Plugs
Staubkappen für Nippel**

Size Größe	Order No - Bestellnr
12	169.12 KU 00
16	169.16 KU 00
20	169.20 KU 00
24	169.24 KU 00
32	169.32 KU 00
40	169.40 KU 00
48	169.48 KU 00
64	169.64 KU 00

20 horizontal grey bars for text entry.
